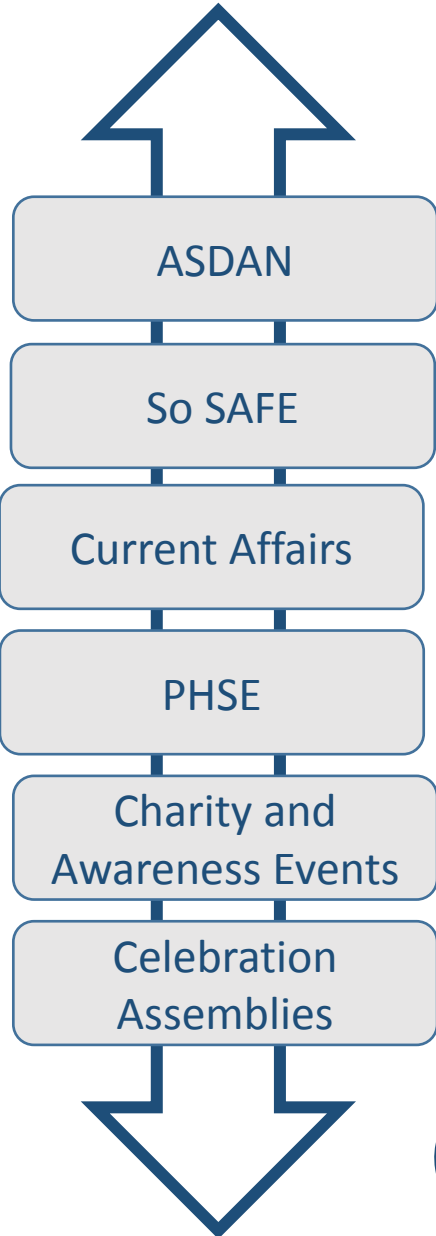



SMSC at Parayhouse

Semi-formal

Formal


PHSE

Students on the formal pathway receive PHSE lessons which follow adapted schemes of work from the PHSE Association and form their RSE curriculum


ASDAN - The school follows a programme of study towards ASDAN certifications in 4 areas of the 'My Independence' programme. Students access these lessons in key stage groups.



SO SAFE/RSE - The SoSAFE! programme provides teachers with simple visual tools to enhance and promote social safety skills. The programme uses a standardised framework of concepts, symbols and visual lesson materials to teach the type and degree of communicative and physical intimacy appropriate with different groups of people. For students on the semi-formal pathway SoSAFE! forms their RSE curriculum input however RSE is delivered separately in discreet lessons for those on the formal pathway.




Students experience a programme of charity and awareness days across each year linked to our school equalities objectives. Termly celebration assemblies are interactive events which bring students, parents and staff together to consider a key theme e.g celebrating differences linked to core British values and citizenship. Weekly assemblies are used to highlight other events or celebration days from differing religions, cultures and topical issues.



charity



BRITISH VALUES are embedded through our curriculum and wider school ethos and values.



values