

## Parayhouse Weekly Newsletter

- ❖ At this time of year which can often be focused on the more material things, the teachers have decided to reward 1 student who has displayed kindness, generosity and selflessness across the year. This will be an annual 'Kindness' award presented at Christmas to a recipient chosen by the whole staff body who will receive a hamper of gifts donated by staff. This year's winner will be announced at assembly next Thursday.
- ❖ A reminder that the last day for students next week is Thursday and we finish at 2.30pm. All transport providers have been informed. Students may wear their own clothes on this day as we have the Christmas Party in the afternoon.
- ❖ Thank you to all those who supported our running Santa's at the weekend. They all did a fantastic job and a full report will follow in the module newsletter next week.
- ❖ As a parent, do you use particular **websites** for information related to your children? This could be for advice/information on health, entertainment, local activities, education etc. If you do, we would be grateful if you could share them with us by emailing Miss Bristow on [h.bristow@parayhouse.com](mailto:h.bristow@parayhouse.com)

**So far we have raised £48.60 for the - 'Save the children' charity. Thank you for all of your generous donations, and to the children and staff at Parayhouse for taking part by wearing your festive Christmas jumpers.**

## **ABSENT FROM SCHOOL**

If you are going to be late collecting your child, or your child is going to be late coming into school, has a medical appointment or will be absent from school for any reason please call or email the School office 020 8741 1400 [a.sullivan@parayhouse.com](mailto:a.sullivan@parayhouse.com). It is vital that the information is shared centrally with the school so that it can be passed on through the correct channels. Thank you for your support with this.

## **LUNCH MENU**

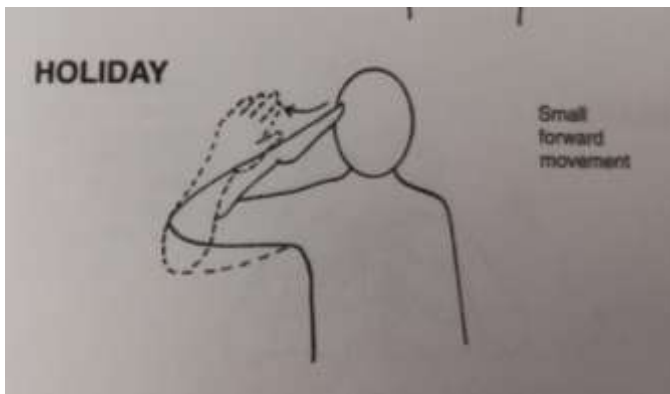
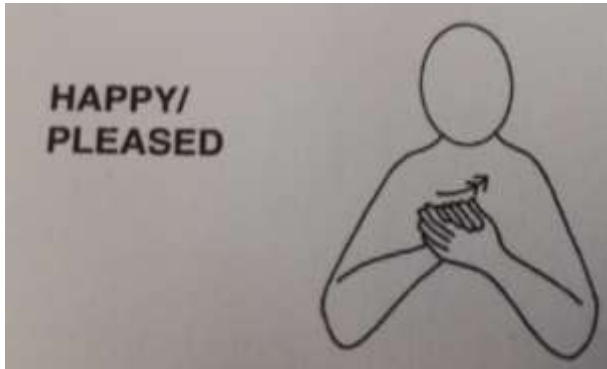
Next week we will be on Week 3. Lunches cost £3.15 per day, this can be paid daily, weekly or termly. If you wish to pay by online banking please call and we will let you have our banking details.

## **DIARY DATES 2018/19**

<b>DECEMBER</b>	
20 <sup>th</sup>	Christmas Party for whole school Last Day
<b>JANUARY</b>	
8 <sup>th</sup>	Students return
9 <sup>th</sup>	Swimming starts for Saturn
15 <sup>th</sup>	Year 10 Booster Vaccinations
<b>FEBRUARY</b>	
1 <sup>st</sup>	Panathlon Multi Sports Event
8 <sup>th</sup>	Healthy Schools Assembly

# Makaton

Next week's signs are:





## Star of the Week awards go to...

<b>Pluto</b>	Sam Griffiths & Lettie Oliver	Star of the week – For a fantastic performance in Aladdin
<b>Saturn</b>	All of Saturn class	Star of the week – For fantastic acting in their Christmas play
<b>Jupiter</b>	Charlie Rowley	Star of the week – For fantastic performing in his Christmas play 'Aladdin'
<b>Neptune</b>	All of Neptune class	Star of the week – For a great performance in their Christmas play
<b>Mars</b>	All of Mars class	Star of the week – For an excellent performance in their Christmas play

<b>Pluto</b>	Max Wraith	Star communicator – For remembering and saying his lines so well during the Prince Ali parade yesterday
<b>Saturn</b>	Isa Ahmed	Star communicator – For remembering all of his lines and using a loud voice in Saturn's Christmas performance
<b>Jupiter</b>	Mia Arlotta, Sara Cherkaoui and Georgie-Ryan Arnold-Cox	Star communicator – Georgie-Ryan did a fantastic job in Jupiter as their shop keeper using excellent communication.  Sara and Mia – for using assertive and clear language skills during their Christmas card sale
<b>Neptune</b>	All of Neptune class	Star communicator – For everyone learning signs and words for Jingle bells
<b>Mars</b>	Rochelle, Zubeida, Helen, Feyona, Natalia	Star communicator - For using assertive and clear language skills during their Christmas card sale on Thursday

## Attendance Figures

	w/c 29.10	w/c 5.11	w/c 12.11	w/c 19.11	w/c 26.11	w/c 3.12	w/c 10.12
<b>Pluto</b>	100%	100%	96.7%	97.8%	97.2%	96.4%	96.4%
<b>Saturn</b>	93.6%	100%	98.2%	94.5%	98.9%	97.0%	96.5%
<b>Jupiter</b>	99.2%	85%	96.7%	94.2%	95.8%	94.9%	95.2%
<b>Neptune</b>	97.8%	88.9%	100%	88.9%	93.1%	93.7%	93.7%
<b>Mars</b>	98.3%	95%	96.9%	99.2%	100%	94.6%	95.0%

